



E N G I N E E R E D   W I T H   P U R P O S E

**SAFETY WEAR 2018**

**VOL. 2**





## M A N U F A C T U R I N G   S T A N D A R D S

---



Meets the requirements of the South  
African Bureau of Standards in terms of:  
**SANS:434:2011: General Protective Clothing**



**BOVA** has earned a reputation in Africa for delivering high quality engineering within their safety footwear offering. Twenty one years after producing their first safety boot, the brand takes another great stride in the market and extends their portfolio to include overalls and safety wear. Manufactured with the same passion and quality that has made their footwear leaders in Africa, **BOVA** proudly introduces their inaugural range of safety wear.

---





# T H E   E N G I N E E R I N G   W I T H I N



## **VizLite™:**

Our Reflective and Tri-reflect ranges are engineered utilising VizLite™ Dual Technology, the leaders in reflective tapes. VizLite™ is certified to EN 20471:2013 and ANSI 107:2015 international standards for high visibility clothing.

## **BENEFITS OF USING VizLite™ DUAL TECHNOLOGY:**

- Added level of bright phosphorescent visibility in low or no light conditions
- Charged by exposure to daylight or artificial light within minutes and lasts up to 8 hours
- Environmentally-friendly and certified to Oeko-Tex Standard 100
- Works when submerged under water

## **YKK ZIPPERS:**

**BOVA** Safety Wear makes use of YKK zippers, a global leader in fastening products. This quality selection improves the durability of the garments, enhancing their longevity. YKK zippers conform to SANS 1822 standards.



## **WASH ALLOWANCE:**

All garments within our range have been engineered with an additional 3% shrinkage allowance to withstand regular washes, thereby enhancing the longevity of the garments.

## **ELASTICATED WAIST BAND:**

This feature provides flexibility and comfort to the wearer, enabling them to move freely while at work, without the restrictions of a belt.

## **PEN DIVISION:**

Many of the garments within our range feature a pen division for enhanced convenience.



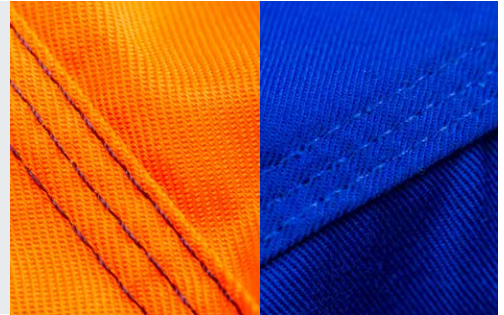
## **SIDE SLITS:**

This feature has been designed to enhance the flexibility and movement of the wearer while working.

# T H E   E N G I N E E R I N G   W I T H I N

## STITCHING:

- All conti suits and boiler suits have been manufactured with triple stitched seams, ensuring enhanced durability against wear and tear
- All pockets have been double stitched with bar tacked stress points for added strength and improved storage capabilities



## POCKETS:

Garment dependent, our range features the following pocket constructions:

### TROUSERS AND BOILER SUITS

- Swing pockets
- Laid on pockets
- Money pocket
- Hip pocket
- Ruler pocket

### JACKETS, DUST COATS AND SHIRTS:

- Large front pockets
- Extended large front pockets
- Press stud breast pockets

## CUFFS:

Garment dependent, our range features the following cuff constructions:

- Elasticated
- Button closure
- Velcro adjustable



## COOL AIR VENT:

Our work shirts have been engineered to include cool air vents on the back and under the arm to allow for ventilation and heat suppression.

## DURAFIT:

**BOVA** has engineered a range of safety wear garments with added padding in areas that matter the most: elbows, seat and knees. Our DuraFit range offers enhanced comfort to the wearer, as well as improved durability to the garments.



## F A B R I C S

---

### **65/35 POLY COTTON:**

This fabric comprises 35% cotton and 65% polyester. Cotton is a natural fibre that is known for its breathability, while polyester is a man-made fibre that is known for its resilience and washability. When polyester is blended with cotton, the resultant fabric offers better crease resistance.

### **J54:**

This fabric is made from 100% cotton and is SABS approved. As a natural fibre, cotton is soft, highly breathable and acts as an insulator. The benefit of this fabric is that the wearer will remain cool in the summer months and warm in winter.

### **D59:**

This fabric is made from 100% cotton and is SABS approved. The fabric is treated with either an acid resistant or flame retardant or both acid resistant and flame retardant finish, depending on the wearer's requirements.

### **POLY VISCOSE:**

This fabric is made from a combination of polyester and viscose. Similar to cotton in its feel, the material is man-made and absorbs perspiration quickly, making it skin-friendly, but with little thermal properties.

### **HIGH VIZ:**

The luminous fabric used in our High VIZ range comprises 50% polyester and 50% cotton. This is a highly visible fabric that offers extreme visibility in low to no light conditions. This fabric is applied to one or two types of base fabrics; either 65/35 poly cotton or 100% cotton.

## T R E A T M E N T S

---

### **ACID RESISTANT:**

Our acid resistant range is chemically treated to protect users in corrosive environments by defending against acid splashes and acid burns.

### **FLAME RETARDANT:**

Our flame retardant range is chemically treated to ensure that the material has the ability to self-extinguish upon the removal of an ignition source, such as a flame or spark.

### **BOVA FIT:**

**BOVA** has engineered a range of safety wear garments with added padding in the areas that matter most: elbows, seat and knees. In doing so, our Durafit range offers enhanced comfort to the wearer, as well as improved durability to the garments.

## CONTI SUITS

PG 7-28

STANDARD WORK JACKET   TROUSERS	7-12
REFLECTIVE WORK JACKET   TROUSERS	13-20
TRI-REFLECT WORK JACKET   TROUSERS	21-26
HIGH VISIBILITY WORK JACKET   TROUSERS	27-28

## BOILER SUITS

PG 29-35

DURAFIT STANDARD BOILER SUITS	29-29
REFLECTIVE BOILER SUITS	30-30
DURAFIT REFLECTIVE BOILER SUITS	31-32
TRI-REFLECT BOILER SUITS	33-34
DURAFIT TRI-REFLECT BOILER SUITS	35-35

## DUST COATS

PG 36-37

STANDARD DUST COAT	36-36
ACID RESISTANT DUST COAT	37-37

## WORK SHIRTS

PG 38

HIGH VISIBILITY WORK SHIRT	38-38
----------------------------	-------

## SIZE CHART

PG 39

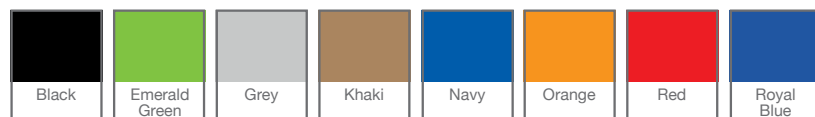


# STANDARD WORK JACKET

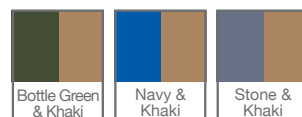
CODE: OJ12927



## IN STOCK



## MADE TO ORDER OJ13070



**FABRIC:** • 65/35 POLY COTTON

**WEIGHT:** • 235gsm

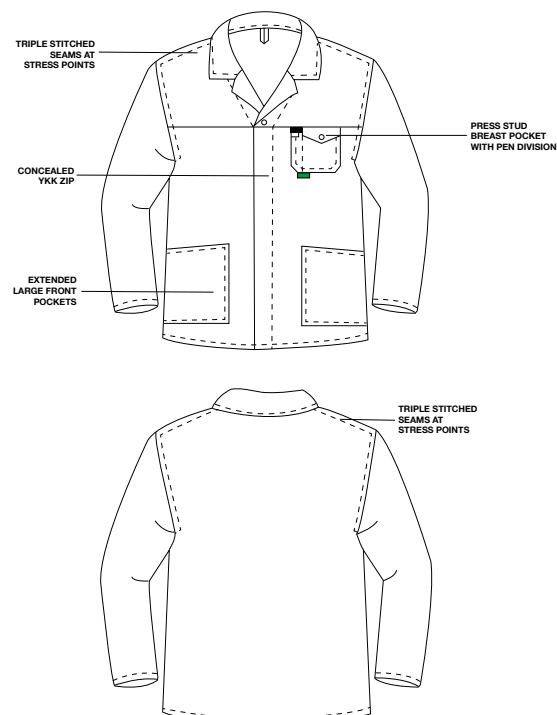
**SIZES:** • 32 | 34 | 36 | 38 | 40 | 42 | 44 | 46 |  
48 | 50 | 52 | 54 | 56 | 58 | 60 |

**CLOSURES:** • Concealed YKK aluminium zip – Type 5

**POCKETS:** • Press stud breast pocket with pen division |  
Extended large front pockets

**STITCHING:** • Triple stitched stress seams for enhanced durability |  
Bar tacked at stress points for extra strength

**COMFORT:** • Wide back yoke for extra comfort





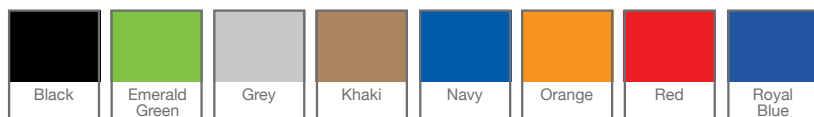


# STANDARD WORK TROUSERS

CODE: OT12935



## IN STOCK



## MADE TO ORDER



**FABRIC:** • 65/35 POLY COTTON

**WEIGHT:** • 235gsm

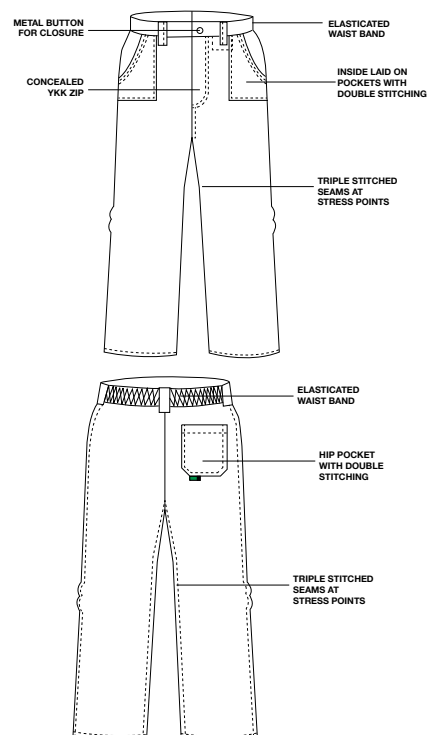
**SIZES:** • 28 | 30 | 32 | 34 | 36 | 38 | 40 | 42 |  
44 | 46 | 48 | 50 | 52 | 54 | 56 |

**CLOSURES:** • Concealed YKK aluminium zip – Type 3 |  
Metal button

**POCKETS:** • Front inside laid on pockets | Back hip pocket

**STITCHING:** • Triple stitched stress seams for enhanced durability |  
Bar tacked at stress points for extra strength

**COMFORT:** • Elasticated waist band | Extra thigh space for  
enhanced comfort



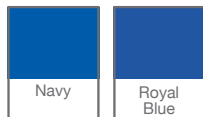


# STANDARD WORK JACKET

CODE: OJ12931

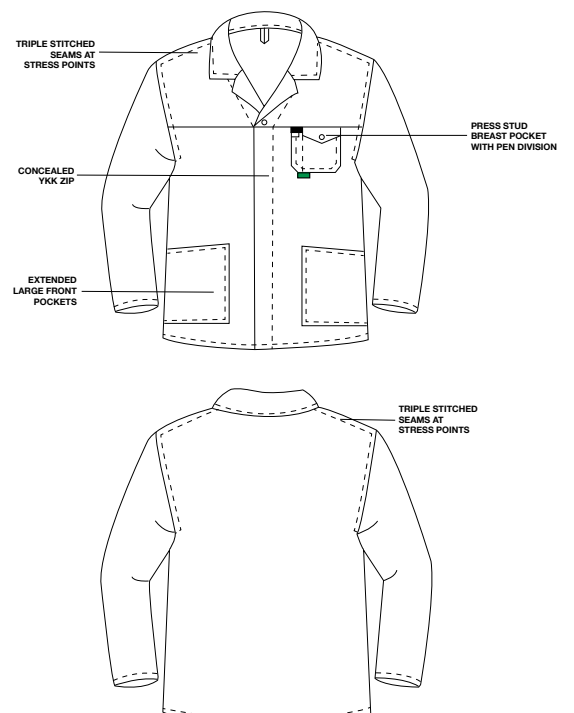


## IN STOCK



- FABRIC:** • J54 100% COTTON
- WEIGHT:** • 220gsm
- SIZES:** • 32 | 34 | 36 | 38 | 40 | 42 | 44 | 46 |  
48 | 50 | 52 | 54 | 56 | 58 | 60 |

- CLOSURES:** • Concealed YKK aluminium zip – Type 5
- POCKETS:** • Press stud breast pocket with pen division |  
Extended large front pockets
- STITCHING:** • Triple stitched stress seams for enhanced durability |  
Bar tacked at stress points for extra strength
- COMFORT:** • Wide back yoke for extra comfort



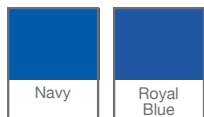


# STANDARD WORK TROUSERS

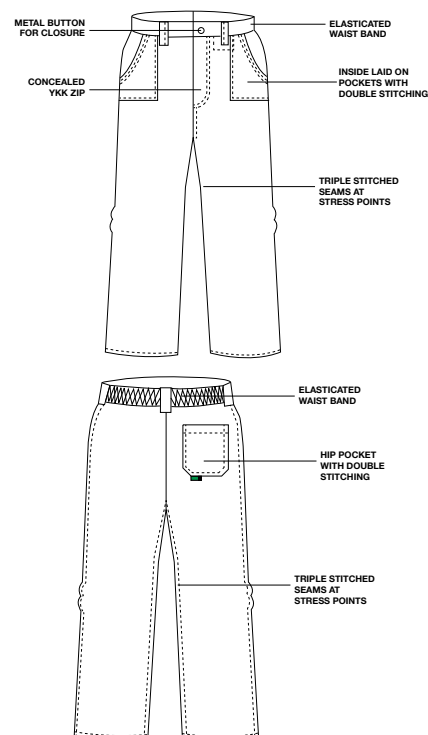
CODE: OT12940



IN STOCK



- FABRIC:** • J54 100% COTTON
- WEIGHT:** • 220gsm
- SIZES:** • 28 | 30 | 32 | 34 | 36 | 38 | 40 | 42 | 44 | 46 | 48 | 50 | 52 | 54 | 56 |
- CLOSURES:** • Concealed YKK aluminium zip – Type 3 | Metal button
- POCKETS:** • Front inside laid on pockets | Back hip pocket
- STITCHING:** • Triple stitched stress seams for enhanced durability | Bar tacked at stress points for extra strength
- COMFORT:** • Elasticated waist band | Extra thigh space for enhanced comfort





# STANDARD WORK JACKET

CODE: OJ12926

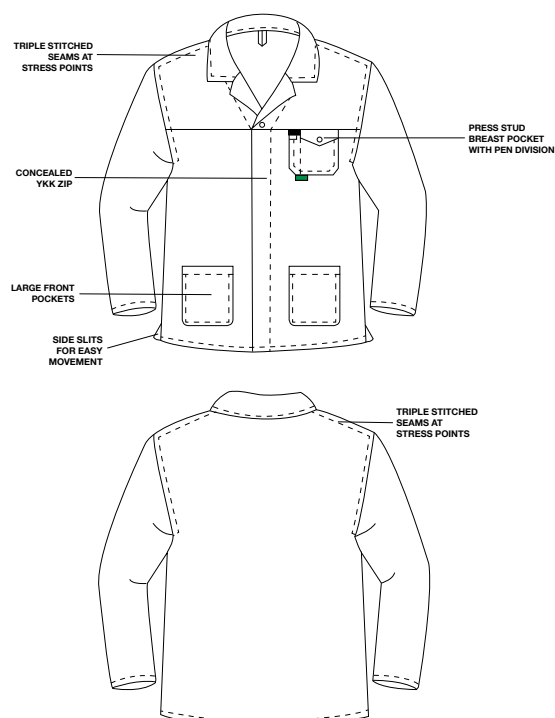


## IN STOCK



Bottle Green

- FABRIC:** • POLY VISCOSE ACID RESISTANT
- WEIGHT:** • 260gsm
- SIZES:** • 32 | 34 | 36 | 38 | 40 | 42 | 44 | 46 | 48 | 50 | 52 | 54 | 56 | 58 | 60 |
- CLOSURES:** • Concealed YKK aluminium zip – Type 5
- POCKETS:** • Press stud breast pocket with pen division | Large front pockets
- STITCHING:** • Triple stitched stress seams for enhanced durability | Bar tacked at stress points for extra strength
- COMFORT:** • Wide back yoke for extra comfort | Side slits for easy movement



YKK ZIP



TRIPLE STITCHING



ACID RESISTANT





# STANDARD WORK TROUSERS

CODE: OT12934



IN STOCK



Bottle Green

**FABRIC:** • POLY VISCOSE ACID RESISTANT

**WEIGHT:** • 260gsm

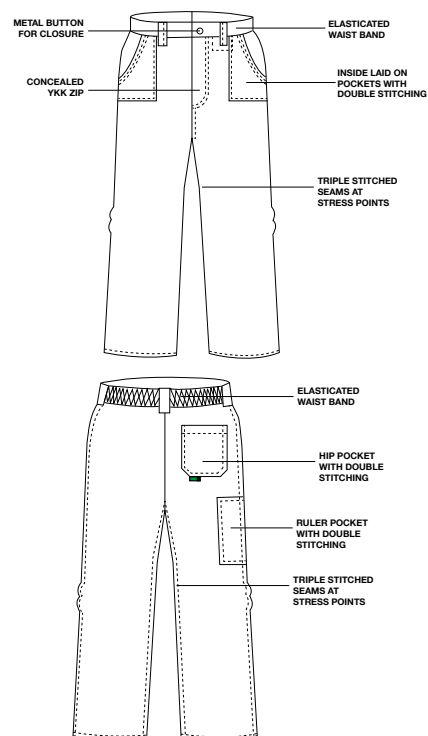
**SIZES:** • 28 | 30 | 32 | 34 | 36 | 38 | 40 | 42 |  
44 | 46 | 48 | 50 | 52 | 54 | 56 |

**CLOSURES:** • Concealed YKK aluminium zip – Type 3 |  
Metal button

**POCKETS:** • Front inside laid on pockets | Front money pocket |  
Back hip pocket | Ruler pocket

**STITCHING:** • Triple stitched stress seams for enhanced durability |  
Bar tacked at stress points for extra strength

**COMFORT:** • Elasticated waist band | Extra thigh space for  
enhanced comfort





# REFLECTIVE WORK JACKET

CODE: OJ12945

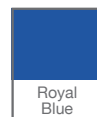


IN STOCK



Navy

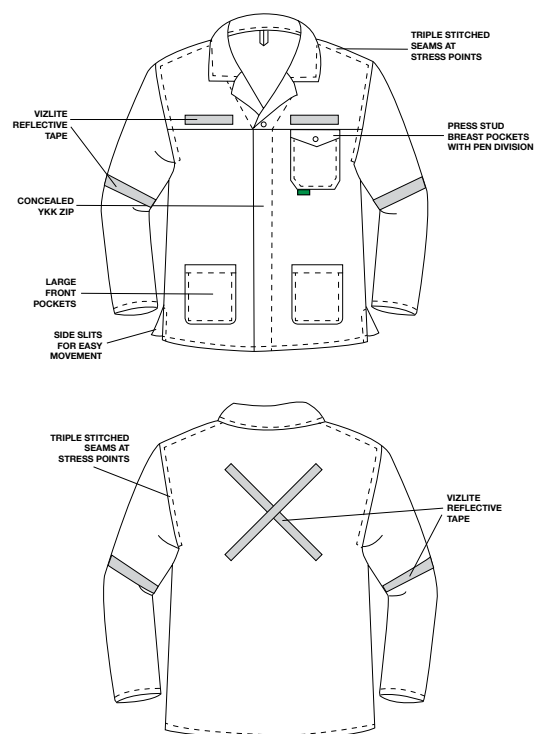
MADE TO ORDER



Royal Blue

- FABRIC:** • J54 100% COTTON
- WEIGHT:** • 220gsm
- SIZES:** • 32 | 34 | 36 | 38 | 40 | 42 | 44 | 46 | 48 | 50 | 52 | 54 | 56 | 58 | 60 |

- REFLECTIVE:** • 25mm VizLite™ reflective tape
- CLOSURES:** • Concealed YKK brass zip – Type 5
- POCKETS:** • Press stud breast pocket with pen division | Large front pockets
- STITCHING:** • Triple stitched stress seams for enhanced durability | Bar tacked at stress points for extra strength
- COMFORT:** • Wide back yoke for extra comfort | Side slits for easy movement





# REFLECTIVE WORK TROUSERS

CODE: OT12949



IN STOCK

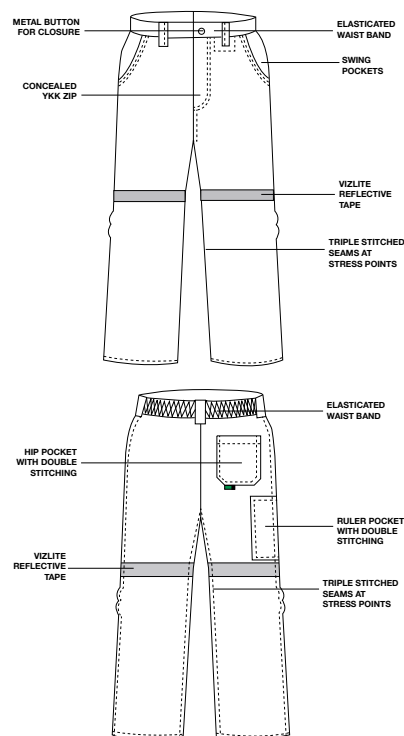


MADE TO ORDER



- FABRIC:** • J54 100% COTTON
- WEIGHT:** • 220gsm
- SIZES:** • 28 | 30 | 32 | 34 | 36 | 38 | 40 | 42 | 44 | 46 | 48 | 50 | 52 | 54 | 56 |

- REFLECTIVE:** • 25mm VizLite™ reflective tape
- CLOSURES:** • Concealed YKK brass zip – Type 3 | Metal button
- POCKETS:** • Front swing pockets | Front money pocket | Back hip pocket | Ruler pocket
- STITCHING:** • Triple stitched stress seams for enhanced durability | Bar tacked at stress points for extra strength
- COMFORT:** • Elasticated waist band | Extra thigh space for enhanced comfort



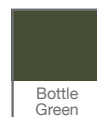


# REFLECTIVE WORK JACKET

CODE: OJ13062



MADE TO ORDER



**FABRIC:** • POLY VISCOSE ACID RESISTANT

**WEIGHT:** • 260gsm

**SIZES:** • 32 | 34 | 36 | 38 | 40 | 42 | 44 | 46 |  
48 | 50 | 52 | 54 | 56 | 58 | 60 |

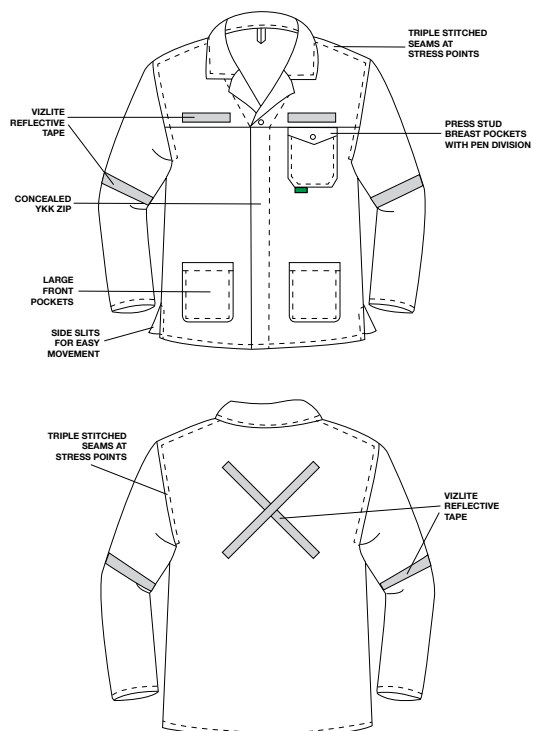
**REFLECTIVE:** • 25mm VizLite™ reflective tape

**CLOSURES:** • Concealed YKK brass zip – Type 5

**POCKETS:** • Press stud breast pocket with pen division |  
Large front pockets

**STITCHING:** • Triple stitched stress seams for enhanced durability |  
Bar tacked at stress points for extra strength

**COMFORT:** • Wide back yoke for extra comfort | Side slits for  
easy movement



ACID  
RESISTANT



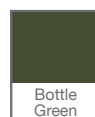


# REFLECTIVE WORK TROUSERS

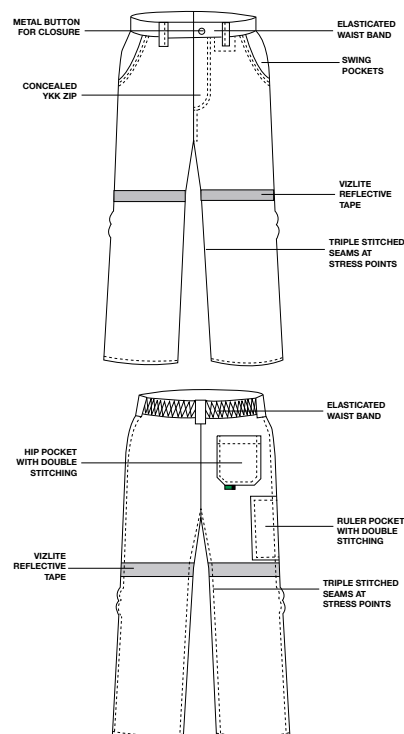
CODE: OT13063



MADE TO ORDER



- FABRIC:** • POLY VISCOSE ACID RESISTANT
- WEIGHT:** • 260gsm
- SIZES:** • 28 | 30 | 32 | 34 | 36 | 38 | 40 | 42 | 44 | 46 | 48 | 50 | 52 | 54 | 56 |
- REFLECTIVE:** • 25mm VizLite™ reflective tape
- CLOSURES:** • Concealed YKK brass zip – Type 3 | Metal button
- POCKETS:** • Front swing pockets | Front money pocket | Back hip pocket | Ruler pocket
- STITCHING:** • Triple stitched stress seams for enhanced durability | Bar tacked at stress points for extra strength
- COMFORT:** • Elasticated waist band | Extra thigh space for enhanced comfort



ACID RESISTANT



# REFLECTIVE WORK JACKET

CODE: OJ12929



MADE TO ORDER



**FABRIC:** • D59 100% COTTON FLAME RETARDANT

**WEIGHT:** • 300gsm

**SIZES:** • 32 | 34 | 36 | 38 | 40 | 42 | 44 | 46 |  
48 | 50 | 52 | 54 | 56 | 58 | 60 |

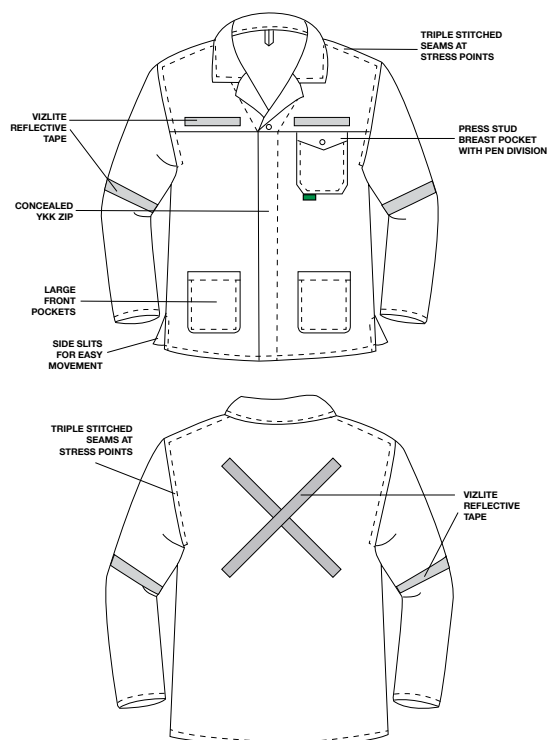
**REFLECTIVE:** • 25mm VizLite™ reflective tape

**CLOSURES:** • Concealed YKK brass zip – Type 5

**POCKETS:** • Press stud breast pocket with pen division |  
Large front pockets

**STITCHING:** • Triple stitched stress seams for enhanced durability |  
Bar tacked at stress points for extra strength

**COMFORT:** • Wide back yoke for extra comfort | Side slits  
for easy movement



FLAME  
RETARDANT



100%  
COTTON

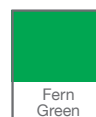


# REFLECTIVE WORK TROUSERS

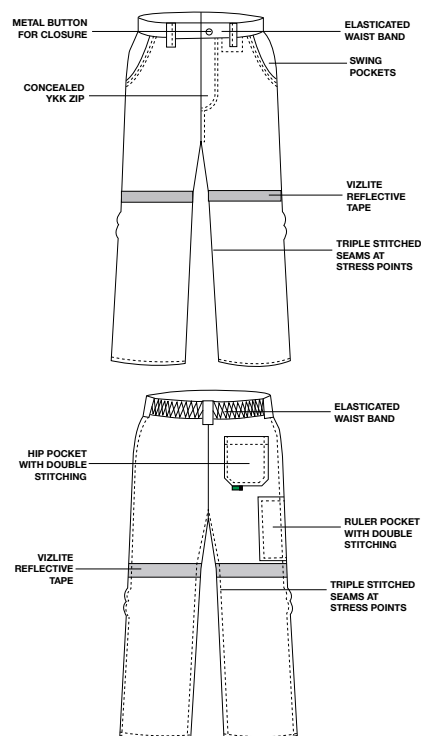
CODE: OT12937



MADE TO ORDER



- FABRIC:** • D59 100% COTTON FLAME RETARDANT
- WEIGHT:** • 300gsm
- SIZES:** • 28 | 30 | 32 | 34 | 36 | 38 | 40 | 42 | 44 | 46 | 48 | 50 | 52 | 54 | 56 |
- REFLECTIVE:** • 25mm VizLite™ reflective tape
- CLOSURES:** • Concealed YKK brass zip – Type 3 | Metal button
- POCKETS:** • Front swing pockets | Back hip pocket | Ruler pocket
- STITCHING:** • Triple stitched stress seams for enhanced durability | Bar tacked at stress points for extra strength
- COMFORT:** • Elasticated waist band | Extra thigh space for enhanced comfort



FLAME  
RETARDANT



100%  
COTTON



# REFLECTIVE WORK JACKET

CODE: OJ12930



IN STOCK



Navy



**FABRIC:** • D59 100% COTTON FLAME RETARDANT AND ACID RESISTANT

**WEIGHT:** • 300gsm

**SIZES:** • 32 | 34 | 36 | 38 | 40 | 42 | 44 | 46 |  
48 | 50 | 52 | 54 | 56 | 58 | 60 |

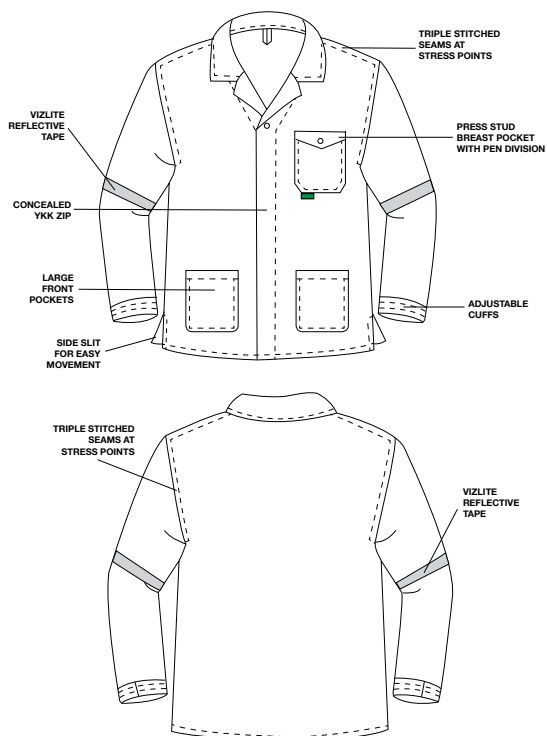
**REFLECTIVE:** • 48mm VizLite™ reflective tape

**CLOSURES:** • Concealed YKK brass zip – Type 5 | Elasticated cuffs

**POCKETS:** • Press stud breast pocket with pen division |  
Large front pockets

**STITCHING:** • Triple stitched stress seams for enhanced durability |  
Bar tacked at stress points for extra strength

**COMFORT:** • Side slits for easy movement







# REFLECTIVE WORK TROUSERS

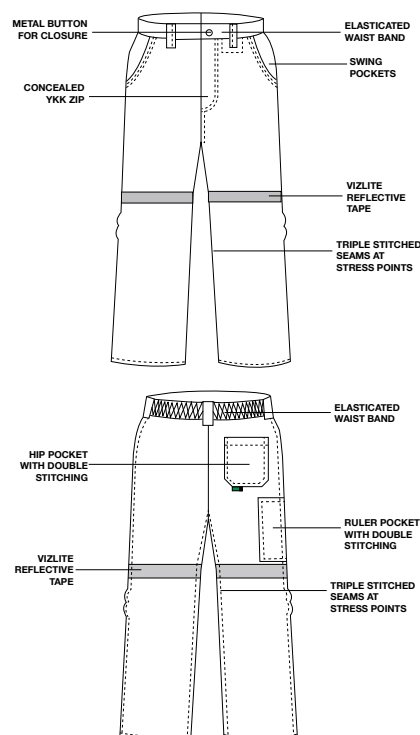
CODE: OT12938



IN STOCK



- FABRIC:** • **D59 100% COTTON FLAME RETARDANT AND ACID RESISTANT**
- WEIGHT:** • 300gsm
- SIZES:** • 28 | 30 | 32 | 34 | 36 | 38 | 40 | 42 |  
44 | 46 | 48 | 50 | 52 | 54 | 56 |
- REFLECTIVE:** • 48mm VizLite™ reflective tape
- CLOSURES:** • Concealed YKK brass zip – Type 3 | Metal button
- POCKETS:** • Front swing pockets | Front money pocket | Ruler pocket | Back hip pocket
- STITCHING:** • Triple stitched stress seams for enhanced durability | Bar tacked at stress points for extra strength
- COMFORT:** • Elasticated waist band



YKK ZIP



VIZLITE™



TRIPLE  
STITCHING



DA GAMA  
TEXTILES



FLAME RETARDANT  
ACID RESISTANT

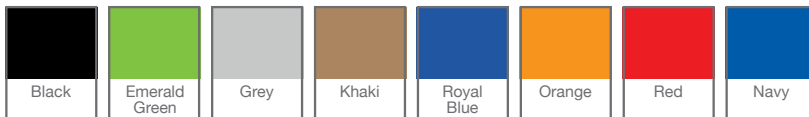


# TRI-REFLECT WORK JACKET

CODE: OJ12928



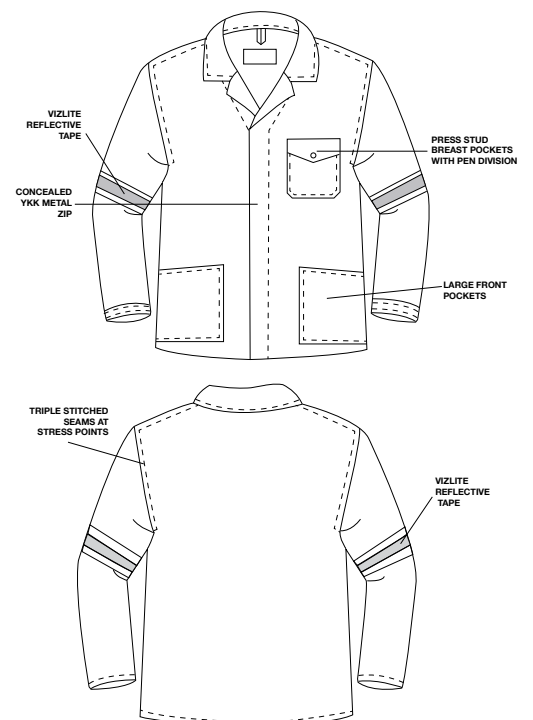
## IN STOCK



## MADE TO ORDER



- FABRIC:** • 65/35 POLY COTTON
- WEIGHT:** • 235gsm
- SIZES:** • 32 | 34 | 36 | 38 | 40 | 42 | 44 | 46 | 48 | 50 | 52 | 54 | 56 | 58 | 60 |
- 
- REFLECTIVE:** • 19mm VizLite™ reflective tape – Lime/Silver/Lime
- CLOSURES:** • Concealed YKK aluminium zip – Type 5
- POCKETS:** • Press stud breast pocket with pen division | Extended large front pockets
- STITCHING:** • Triple stitched stress seams for enhanced durability | Bar tacked at stress points for extra strength
- COMFORT:** • Wide back yoke for extra comfort



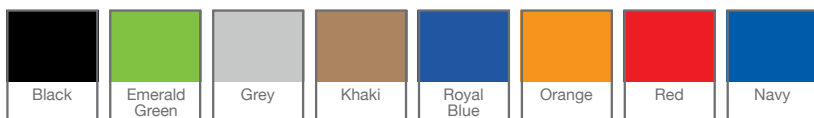


# TRI-REFLECT WORK TROUSERS

CODE: OT12936



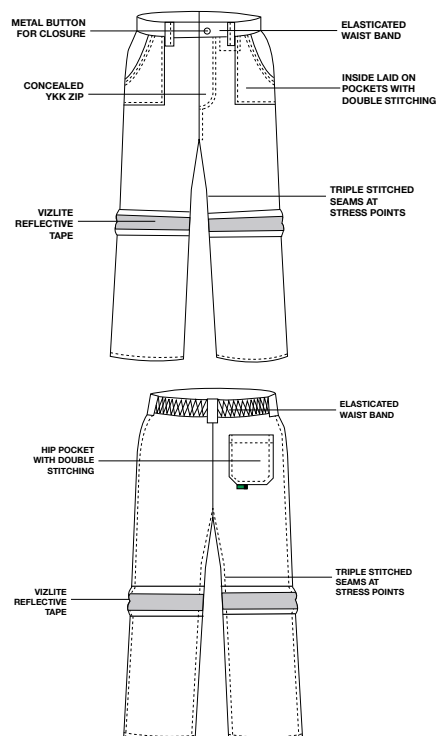
## IN STOCK



## MADE TO ORDER



- FABRIC:** • 65/35 POLY COTTON
- WEIGHT:** • 235gsm
- SIZES:** • 28 | 30 | 32 | 34 | 36 | 38 | 40 | 42 |  
44 | 46 | 48 | 50 | 52 | 54 | 56 |
- REFLECTIVE:** • 19mm VizLite™ reflective tape – Lime/Silver/Lime
- CLOSURES:** • Concealed YKK aluminium zip – Type 5 |  
Metal button
- POCKETS:** • Front inside laid on pockets | Back hip pocket
- STITCHING:** • Triple stitched stress seams for enhanced durability |  
Bar tacked at stress points for extra strength
- COMFORT:** • Elasticated waist band | Extra thigh space for  
enhanced comfort





# TRI-REFLECT WORK JACKET

CODE: OJ12932

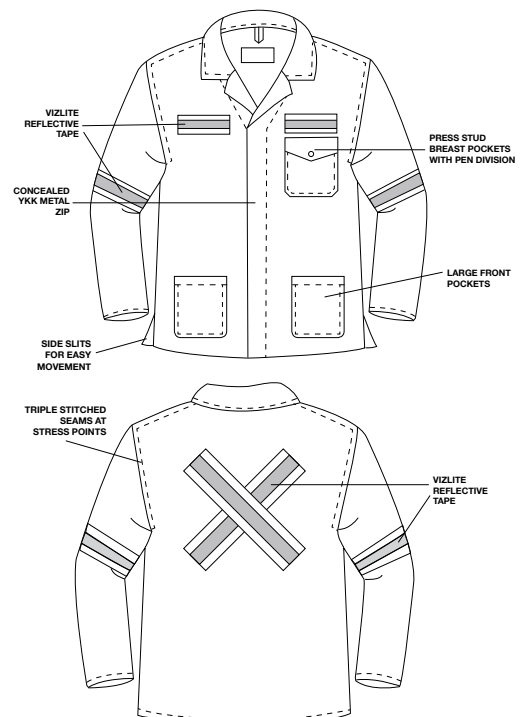


IN STOCK



Navy

- FABRIC:** • J54 100% COTTON
- WEIGHT:** • 220gsm
- SIZES:** • 32 | 34 | 36 | 38 | 40 | 42 | 44 | 46 | 48 | 50 | 52 | 54 | 56 | 58 | 60 |
- REFLECTIVE:** • 19mm VizLite™ reflective tape – Lime/Silver/Lime
- CLOSURES:** • Concealed YKK brass zip – Type 5
- POCKETS:** • Press stud breast pocket with pen division | Large front pockets
- STITCHING:** • Triple stitched stress seams for enhanced durability | Bar tacked at stress points for extra strength
- COMFORT:** • Wide back yoke for extra comfort | Side slits for easy movement



YKK ZIP



VIZLITE™



TRIPLE  
STITCHING



DA GAMA  
TEXTILES







# TRI-REFLECT WORK TROUSERS

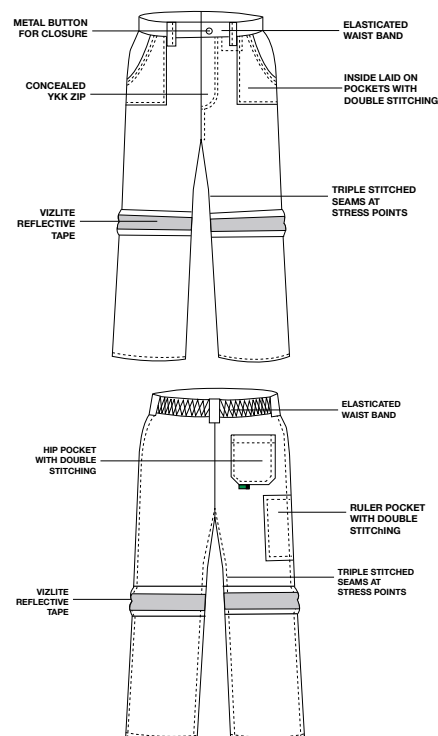
CODE: OT12939



IN STOCK



- FABRIC:** • J54 100% COTTON
- WEIGHT:** • 220gsm
- SIZES:** • 28 | 30 | 32 | 34 | 36 | 38 | 40 | 42 | 44 | 46 | 48 | 50 | 52 | 54 | 56 |
- REFLECTIVE:** • 19mm VizLite™ reflective tape – Lime/Silver/Lime
- CLOSURES:** • Concealed YKK brass zip – Type 3 | Metal button
- POCKETS:** • Front inside laid on pockets | Front money pocket | Back hip pocket | Ruler pocket
- STITCHING:** • Triple stitched stress seams for enhanced durability | Bar tacked at stress points for extra strength
- COMFORT:** • Elasticated waist band | Extra thigh space for enhanced durability



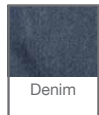


# TRI-REFLECT WORK JACKET

CODE: OJ12925

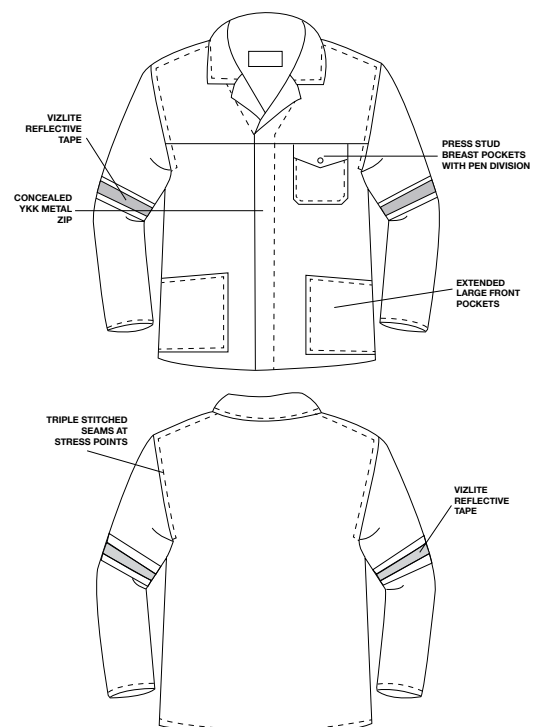


## IN STOCK



Denim

- FABRIC:** • 100% COTTON
- WEIGHT:** • 340gsm /12OZ
- SIZES:** • 32 | 34 | 36 | 38 | 40 | 42 | 44 | 46 |  
48 | 50 | 52 | 54 | 56 | 58 | 60 |
- REFLECTIVE:** • 19mm VizLite™ reflective tape – Lime/Silver/Lime
- CLOSURES:** • Concealed YKK aluminium zip – Type 5
- POCKETS:** • Press stud breast pocket with pen division |  
Extended large front pockets
- STITCHING:** • Triple stitched stress seams for enhanced durability |  
Bar tacked at stress points for extra strength
- COMFORT:** • Wide back yoke for extra comfort



100%  
COTTON



# TRI-REFLECT WORK TROUSERS

CODE: OT12933

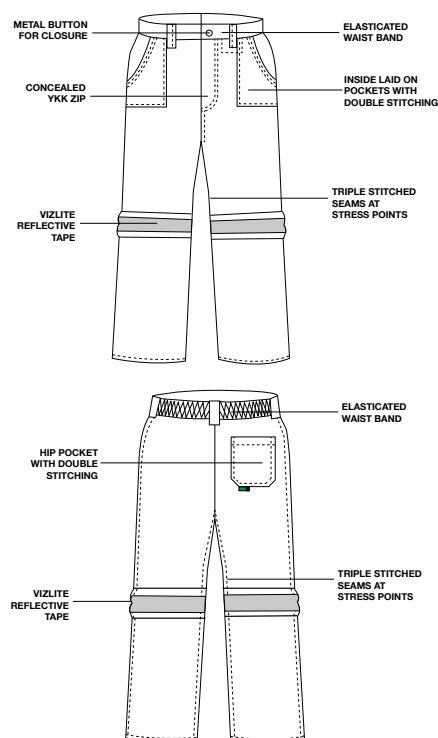


IN STOCK



Denim

- FABRIC:** • 100% COTTON
- WEIGHT:** • 340gsm /12OZ
- SIZES:** • 28 | 30 | 32 | 34 | 36 | 38 | 40 | 42 | 44 | 46 | 48 | 50 | 52 | 54 | 56 |
- REFLECTIVE:** • 19mm VizLite™ reflective tape – Lime/Silver/Lime
- CLOSURES:** • Concealed YKK aluminium zip – Type 3 | Metal button
- POCKETS:** • Front inside laid on pockets | Back hip pocket
- STITCHING:** • Triple stitched stress seams for enhanced durability | Bar tacked at stress points for extra strength
- COMFORT:** • Elasticated waist band | Extra thigh space for enhanced comfort



100%  
COTTON





# HIGH VISIBILITY WORK JACKET

CODE: OJ13072



## MADE TO ORDER



**FABRIC:**

- LUMINOUS FABRIC – 50/50 POLY COTTON
- BASE FABRIC – 65/35 POLY COTTON

**WEIGHT:**

- 235gsm

**SIZES:**

- 32 | 34 | 36 | 38 | 40 | 42 | 44 | 46 | 48 | 50 | 52 | 54 | 56 | 58 | 60 |

**REFLECTIVE:**

- 50mm VizLite™ reflective tape

**CLOSURES:**

- Concealed YKK brass zip – Type 5

**POCKETS:**

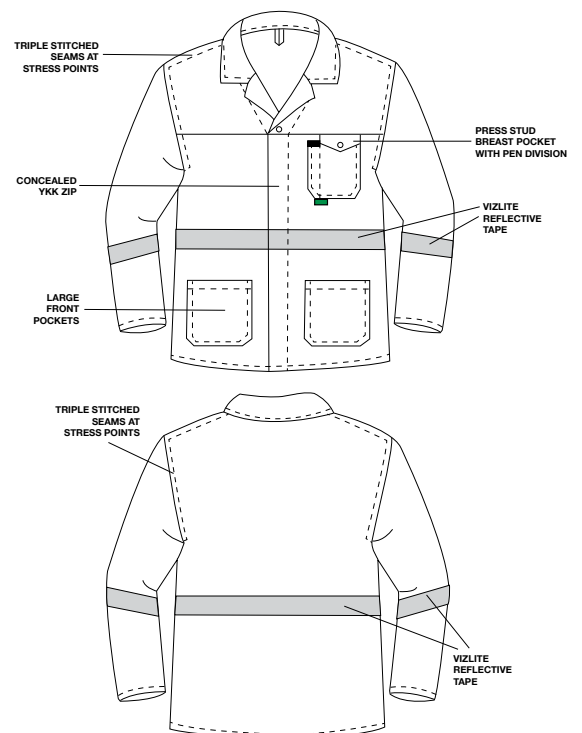
- Press stud breast pocket with pen division | Large front pockets

**STITCHING:**

- Triple stitched stress seams for enhanced durability | Bar tacked at stress points for extra strength

**COMFORT:**

- Wide back yoke for extra comfort







# HIGH VISIBILITY WORK TROUSERS

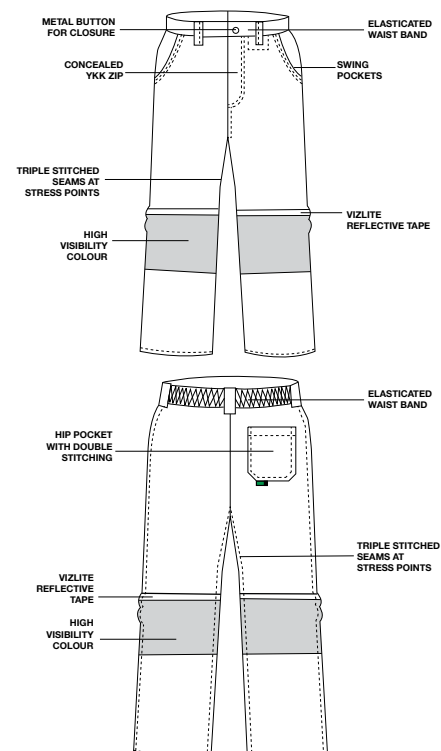
CODE: OT13073



MADE TO ORDER



- FABRIC:**
- **LUMINOUS FABRIC – 50/50 POLY COTTON**
  - **BASE FABRIC – 65/35 POLY COTTON**
- WEIGHT:**
- 235gsm
- SIZES:**
- 28 | 30 | 32 | 34 | 36 | 38 | 40 | 42 | 44 | 46 | 48 | 50 | 52 | 54 | 56 |
- REFLECTIVE:**
- 50mm VizLite™ reflective tape
- CLOSURES:**
- Concealed YKK brass zip – Type 3 | Metal button
- POCKETS:**
- Front swing pockets | Back hip pocket
- STITCHING:**
- Triple stitched stress seams for enhanced durability | Bar tacked at stress points for extra strength
- COMFORT:**
- Elasticated waist band | Extra thigh space for enhanced comfort



YKK ZIP



VIZLITE™



TRIPLE  
STITCHING



HIGH VIZ

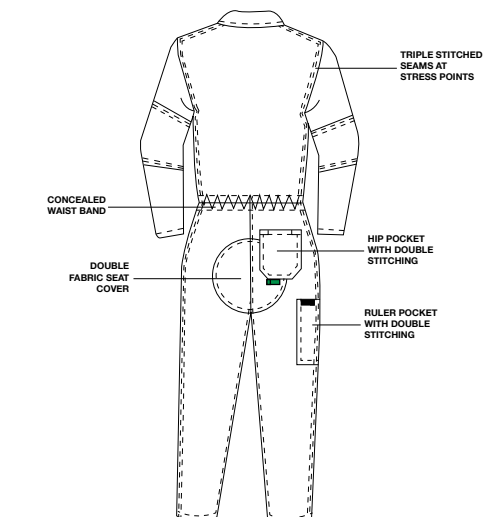
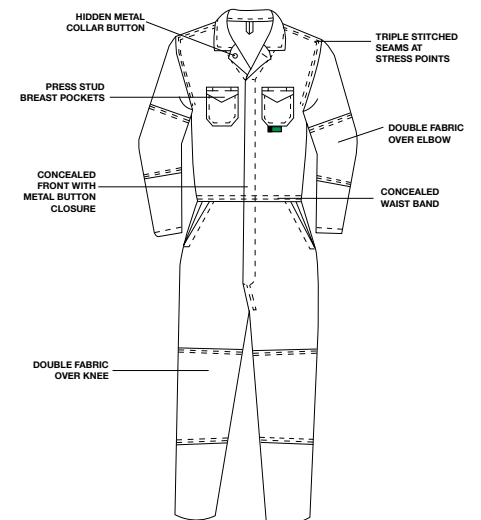


# DURAFIT STANDARD BOILER SUITS

CODE: OB12923



IN STOCK



**FABRIC:** • J54 100% COTTON

**WEIGHT:** • 220gsm

**SIZES:** • 30 | 32 | 34 | 36 | 38 | 40 | 42 | 44 |  
46 | 48 | 50 | 52 | 54 | 56 | 58 | 60 |

**CLOSURES:** • Concealed front with metal buttons | Hidden metal collar button

**POCKETS:** • Press stud breast pockets | Back hip pocket | Ruler pocket

**STITCHING:** • Triple stitched stress seams for enhanced durability | Bar tacked at stress points for extra strength

**COMFORT:** • Concealed elasticated waist band | Double fabric over elbows, knees and seat for extra strength and improved comfort | Extra thigh space for enhanced comfort



TRIPLE  
STITCHING



DA GAMA  
TEXTILES





# REFLECTIVE BOILER SUITS

CODE: OB12921



IN STOCK



**FABRIC:** • D59 100% COTTON FLAME RETARDANT AND ACID RESISTANT

**WEIGHT:** • 300gsm

**SIZES:** • 30 | 32 | 34 | 36 | 38 | 40 | 42 | 44 | 46 | 48 | 50 | 52 | 54 | 56 | 58 | 60 |

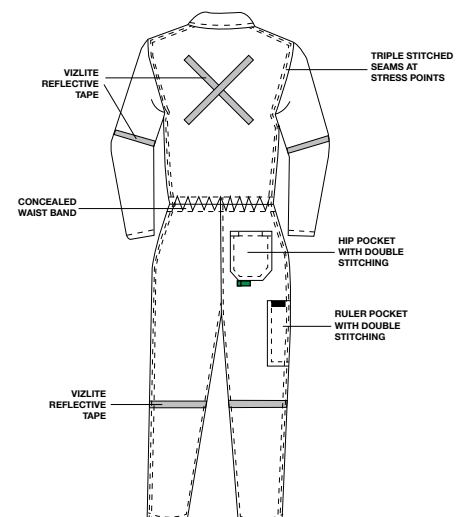
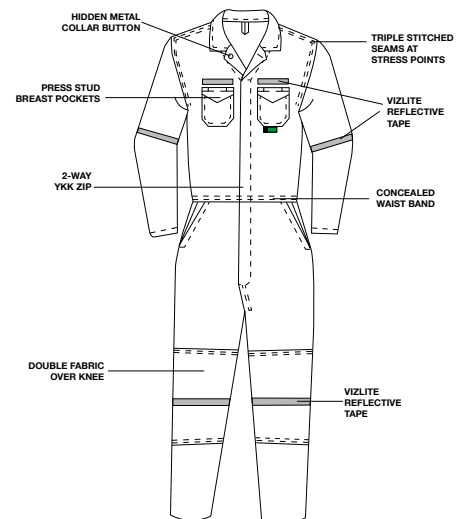
**REFLECTIVE:** • 48mm VizLite™ reflective tape

**CLOSURES:** • Hidden metal collar button | 2-way YKK zip | Elasticated cuffs

**POCKETS:** • Press stud breast pockets | Back hip pocket | Ruler pocket

**STITCHING:** • Triple stitched stress seams for enhanced durability | Bar tacked at stress points for extra strength

**COMFORT:** • Concealed elasticated waist band



VIZLITE™



TRIPLE STITCHING



2-WAY YKK ZIP



DA GAMA TEXTILES



FLAME RETARDANT ACID RESISTANT



# DURAFIT REFLECTIVE BOILER SUITS

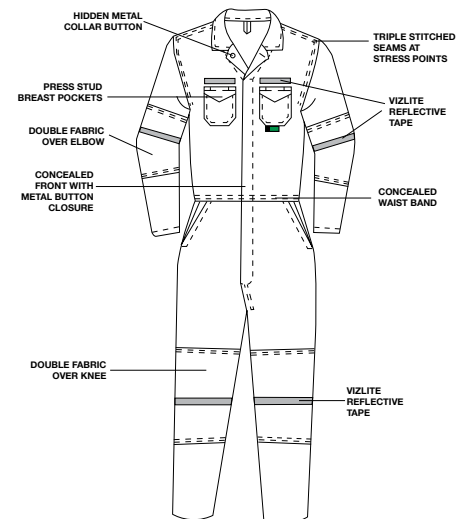
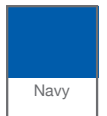
CODE: OB12924



IN STOCK

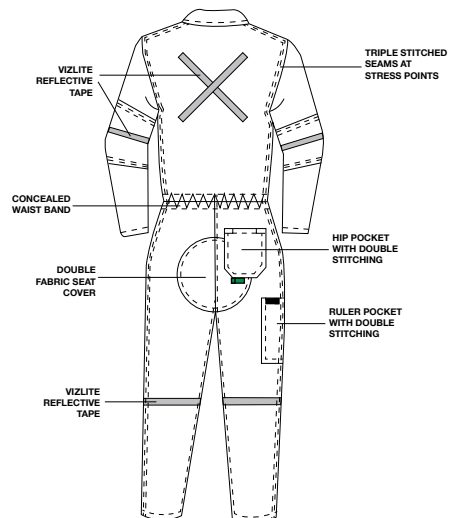


MADE TO  
ORDER  
OB13066



DOUBLE FABRIC OVER KNEE

VIZLITE REFLECTIVE TAPE



**FABRIC:** • J54 100% COTTON

**WEIGHT:** • 220gsm

**SIZES:** • 30 | 32 | 34 | 36 | 38 | 40 | 42 | 44 |  
46 | 48 | 50 | 52 | 54 | 56 | 58 | 60 |

**REFLECTIVE:** • 25mm VizLite™ reflective tape

**CLOSURES:** • Concealed front with metal buttons | Hidden metal collar button

**POCKETS:** • Press stud breast pockets | Back hip pocket | Ruler pocket

**STITCHING:** • Triple stitched stress seams for enhanced durability | Bar tacked at stress points for extra strength

**COMFORT:** • Concealed elasticated waist band | Double fabric over elbows, knees and seat for extra strength | Extra thigh space for enhanced comfort



VIZLITE™

TRIPLE  
STITCHING

DA GAMA  
TEXTILES





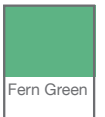


# DURAFIT REFLECTIVE BOILER SUITS

CODE: OB13065



MADE TO ORDER



**FABRIC:** • D59 100% COTTON FLAME RETARDANT

**WEIGHT:** • 300gsm

**SIZES:** • 30 | 32 | 34 | 36 | 38 | 40 | 42 | 44 |  
46 | 48 | 50 | 52 | 54 | 56 | 58 | 60 |

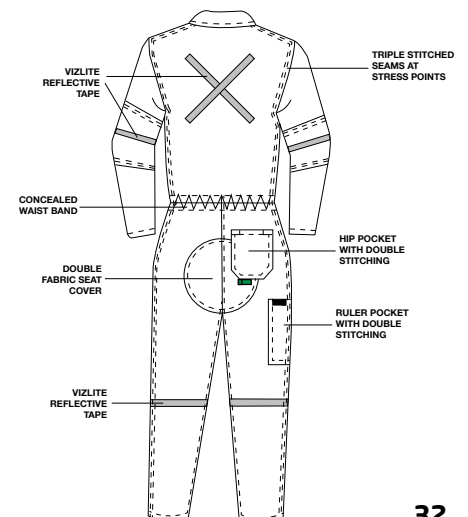
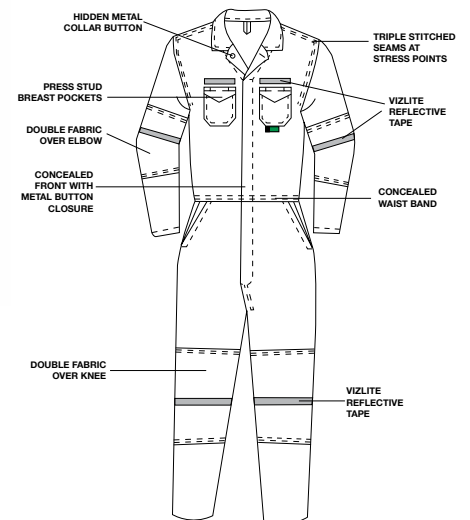
**REFLECTIVE:** • 25mm VizLite™ reflective tape

**CLOSURES:** • Concealed front with metal buttons | Hidden metal collar button

**POCKETS:** • Press stud breast pockets | Back hip pocket | Ruler pocket

**STITCHING:** • Triple stitched stress seams for enhanced durability | Bar tacked at stress points for extra strength

**COMFORT:** • Concealed elasticated waist band | Double fabric over elbows, knees and seat for extra strength and improved comfort | Extra thigh space for enhanced comfort



VIZLITE™

TRIPLE  
STITCHING

DA GAMA  
TEXTILES



FLAME  
RETARDANT



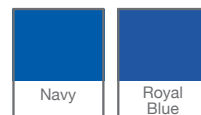


# TRI-REFLECT BOILER SUITS

CODE: OB13075

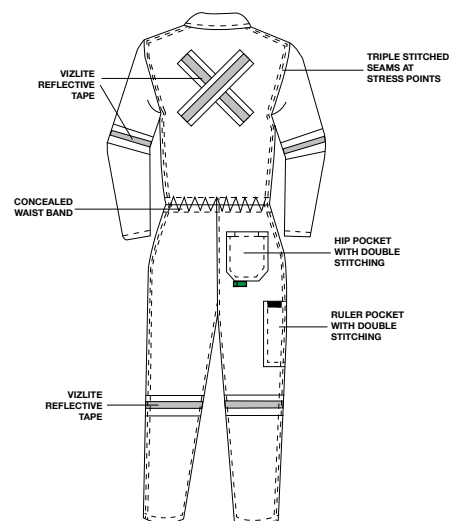
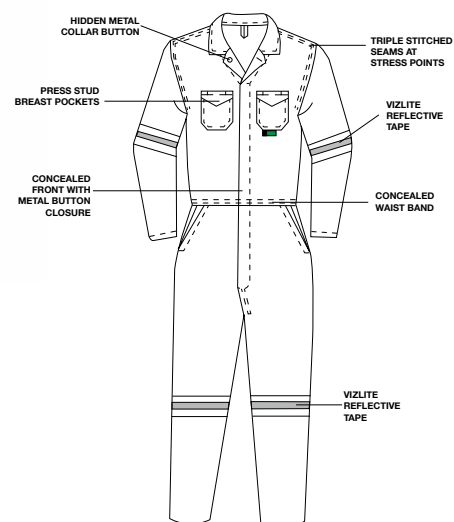


MADE TO ORDER



- FABRIC:** • 65/35 POLY COTTON
- WEIGHT:** • 235gsm
- SIZES:** • 30 | 32 | 34 | 36 | 38 | 40 | 42 | 44 | 46 | 48 | 50 | 52 | 54 | 56 | 58 | 60 |

- REFLECTIVE:** • 19mm VizLite™ reflective tape – Lime/Silver/Lime
- CLOSURES:** • Concealed front with metal buttons
- POCKETS:** • Press stud breast pockets | Back hip pocket | Ruler pocket
- STITCHING:** • Triple stitched stress seams for enhanced durability | Bar tacked at stress points for extra strength
- COMFORT:** • Concealed elasticated waist band | Extra thigh space for enhanced comfort





# TRI-REFLECT BOILER SUITS

CODE: OB13067

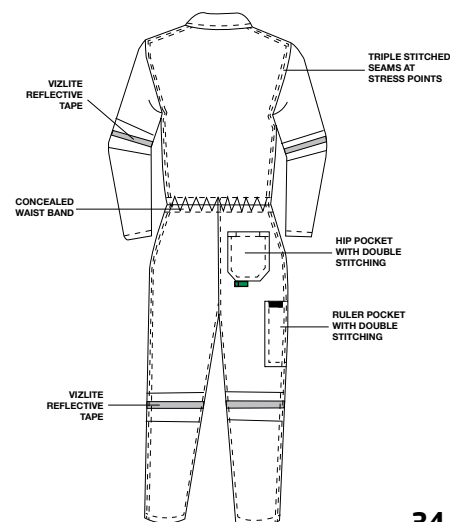
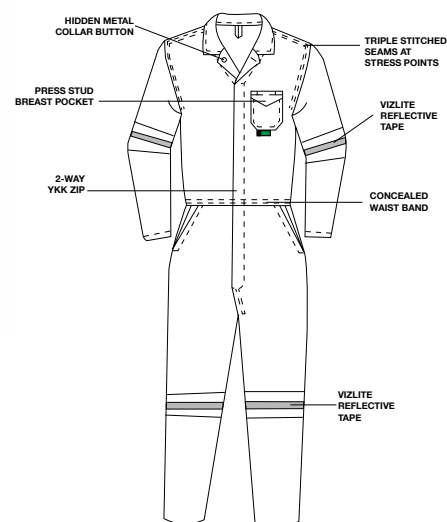


MADE TO ORDER



- FABRIC:** • 65/35 POLY COTTON
- WEIGHT:** • 235gsm
- SIZES:** • 30 | 32 | 34 | 36 | 38 | 40 | 42 | 44 | 46 | 48 | 50 | 52 | 54 | 56 | 58 | 60 |

- REFLECTIVE:** • 19mm VizLite™ reflective tape – Lime/Silver/Lime
- CLOSURES:** • 2-way YKK zip | Hidden metal collar button
- POCKETS:** • Press stud breast pocket | Back hip pocket | Ruler pocket
- STITCHING:** • Triple stitched stress seams for enhanced durability | Bar tacked at stress points for extra strength
- COMFORT:** • Concealed elasticated waist band | Extra thigh space for enhanced comfort







# DURAFIT TRI-REFLECT BOILER SUITS

CODE: OB12922



IN STOCK



**FABRIC:** • J54 100% COTTON

**WEIGHT:** • 220gsm

**SIZES:** • 30 | 32 | 34 | 36 | 38 | 40 | 42 | 44 |  
46 | 48 | 50 | 52 | 54 | 56 | 58 | 60 |

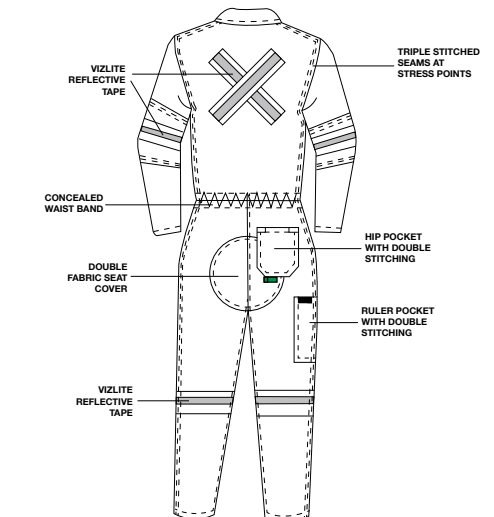
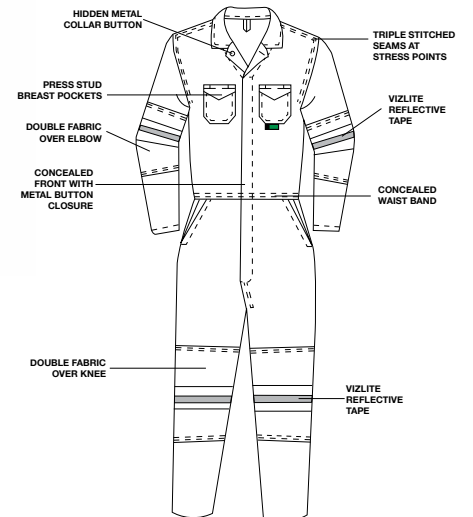
**REFLECTIVE:** • 19mm VizLite™ reflective tape - Lime/Silver/Lime

**CLOSURES:** • Concealed front with metal buttons | Hidden metal collar button

**POCKETS:** • Press stud breast pockets | Back hip pocket | Ruler pocket

**STITCHING:** • Triple stitched stress seams for enhanced durability | Bar tacked at stress points for extra strength

**COMFORT:** • Concealed elasticated waist band | Double fabric over knees, elbows and seat for extra strength and improved comfort | Extra thigh space for enhanced comfort



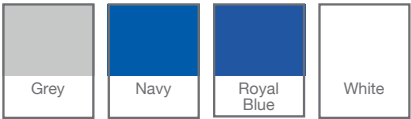


# STANDARD DUST COAT

CODE: OD13069



MADE TO ORDER



- FABRIC:

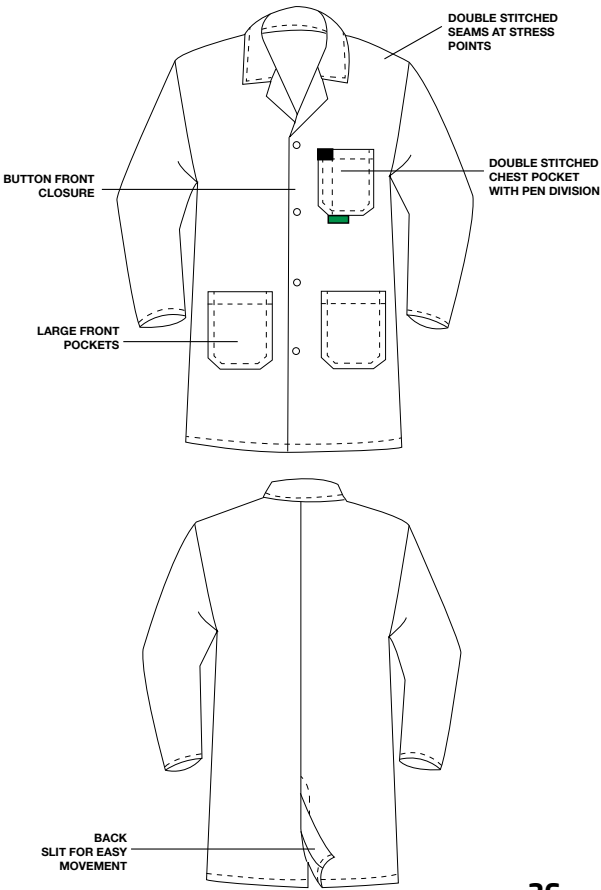
WEIGHT:

SIZES:
- CLOSURES:

POCKETS:

STITCHING:

COMFORT:
- 65/35 POLY COTTON
  - 235gsm
  - 32 | 34 | 36 | 38 | 40 | 42 | 44 | 46 | 48 | 50 | 52 | 54 | 56 | 58 | 60 |
  - Button front
  - Breast pocket with pen division | Large front pockets
  - Double stitched stress seams | Bar tacked at stress points for extra strength
  - Wide back yoke for extra comfort | Back slit for easy movement | Long sleeve | ¾ length



# ACID RESISTANT DUST COAT

CODE: OD13068



MADE TO  
ORDER



**FABRIC:** • 65/35 POLY COTTON ACID RESISTANT

**WEIGHT:** • 235gsm

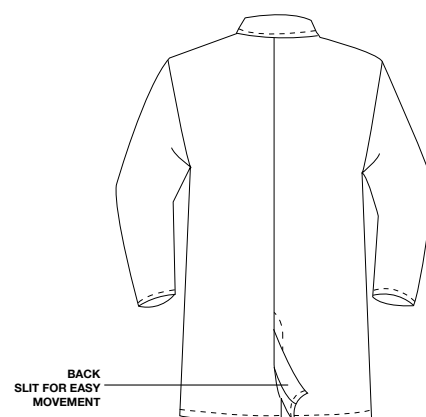
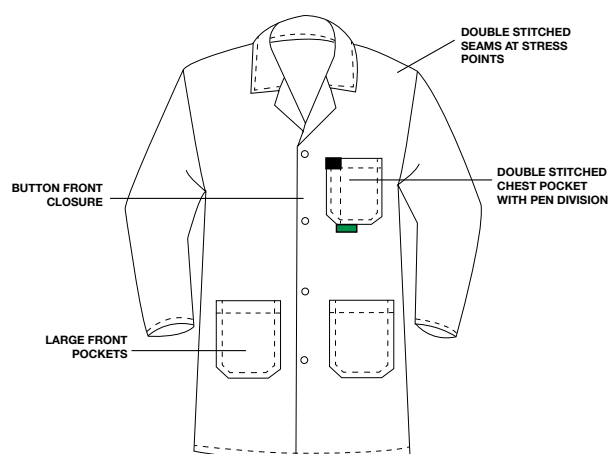
**SIZES:** • 32 | 34 | 36 | 38 | 40 | 42 | 44 | 46 |  
48 | 50 | 52 | 54 | 56 | 58 | 60 |

**CLOSURES:** • Button front

**POCKETS:** • Breast pocket with pen division | Large front pockets

**STITCHING:** • Double stitched stress seams | Bar tacked at stress points for extra strength

**COMFORT:** • Wide back yoke for extra comfort | Back slit for easy movement | Long sleeve |  $\frac{3}{4}$  length



# HIGH VISIBILITY WORK SHIRT

CODE: OS13077



MADE TO ORDER



**FABRIC:**

- LUMINOUS FABRIC – 50/50 POLY COTTON
- BASE FABRIC – 100% COTTON

**WEIGHT:**

- 135gsm

**SIZES:**

- 32 | 34 | 36 | 38 | 40 | 42 | 44 | 46 | 48 | 50 | 52 | 54 | 56 | 58 | 60 |

**REFLECTIVE:**

- 48mm VizLite™ reflective tape

**CLOSURES:**

- Button front closure | Button closure cuffs

**POCKETS:**

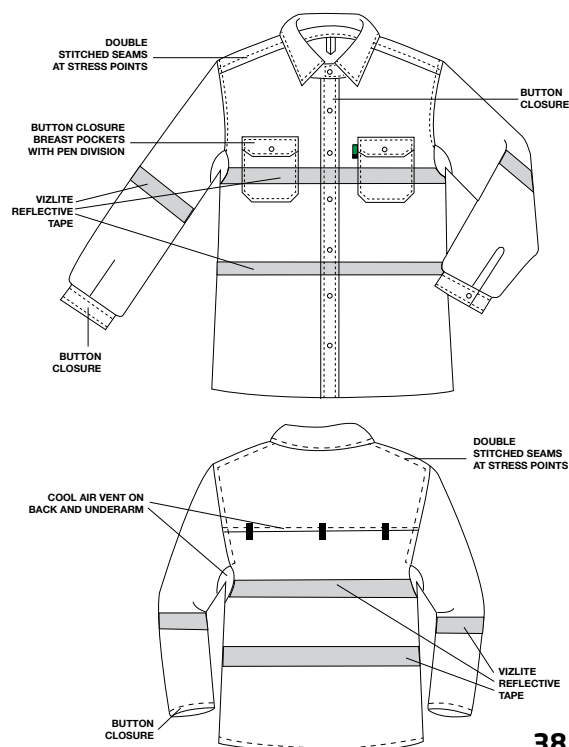
- Breast pockets with pen division

**STITCHING:**

- Double stitched seams for enhanced durability | Bar tacked at stress points for extra strength

**COMFORT:**

- Wide back yoke for extra comfort | Cool air vent on back and underarm for ventilation and breathability



100%  
COTTON

# SIZE CHART

## JACKETS AND DUST COATS

### CHEST MEASUREMENTS

INCHES	32	34	36	38	40	42	44
CM	82	87	92	97	102	107	112
SIZE	XS	S		M		L	

INCHES	46	48	50	52	54	56	58	60
CM	117	122	127	132	137	142	147	152
SIZE	XL		XXL		XXXL		XXXXL	

**NOTE:** Jackets and dust coats are to be ordered by chest size and trousers to be ordered by waist size. Use trouser's waist measurement and increase by two sizes to determine corresponding jacket chest size.

## TROUSERS

### WAIST MEASUREMENTS

INCHES	28	30	32	34	36	38	40
CM	72	77	82	87	92	97	102

INCHES	42	44	46	48	50	52	54	56
CM	107	112	117	122	127	132	137	142

**NOTE:** Trousers to be ordered by waist size and jackets to be ordered by chest size. Use trouser's waist measurement and increase by two sizes to determine corresponding jacket chest size.

## BOILER SUITS

### CHEST MEASUREMENTS

INCHES	30	32	34	36	38	40	42
CM	77	82	87	92	97	102	107
SIZE	XS		S	M		L	

INCHES	44	46	48	50	52	54	56	58	60	62
CM	112	117	122	127	132	137	142	147	152	157
SIZE	XL		XXL		XXXL		XXXXL		XXXXXL	

### CORRELATING WAIST MEASUREMENT:

INCHES	28	30	32	34	36	38	40
CM	72	77	82	87	92	97	102

INCHES	42	44	46	48	50	52	54	56	58
CM	107	112	117	122	127	132	137	142	147

**NOTE:** Boiler suits to be ordered by chest measurement. Check chest measurement table for corresponding waist size. Use trouser's waist measurement and increase by two sizes to determine corresponding jacket chest size.





# NOTES

---

A series of horizontal dotted lines for writing notes.



Phone: +27 31 710 0400

Fax: +27 31 700 2607

Email: [info@beiersf.co.za](mailto:info@beiersf.co.za)

Website: [www.bova.co.za](http://www.bova.co.za)



A product of BBF Safety Group